

LIVING THE BEST OF ISTANBUL
ZORLU CENTER



A life beyond comparison,
blending and redefining the concept of luxury,
right at the heart of a breathtaking city,
with the texture of Istanbul and all of its carefully-woven details...

“WE SET OUT WITH
THE DREAM OF REALIZING
A PROJECT AS
UNIQUE AS ISTANBUL,
AS EXCEPTIONAL AS
ISTANBUL.”

Ahmet Nazif Zorlu
Chairman of the Board



MAKING A DREAM COME TRUE

Adding value and a new dimension to a city as beautiful as Istanbul and creating a new green space where a bustling city can catch its breath, both literally and figuratively was our greatest dream. This unique adventure began with the acquisition of a 102,000 square meter property overlooking the Bosphorus Strait, the fabulous body of water that since time immemorial has entranced Istanbul residents and visitors alike. We set out to create a new locus of attraction at the juncture of Europe and Asia, in the very heart of İstanbul. To select the architectural design capable of fulfilling this dream, we announced the Zorlu Center Architectural and Master Plan Design Competition, at which a total of 117 Turkish and international architectural firms competed and at the end was won by the collaboration between two award-winning architectural groups, Architect Emre Arolat (EAA), winner of the Aga Han award, and RIBA international Award winner Architect Murat Tabanlıoğlu (Tabanlıoğlu Architects).

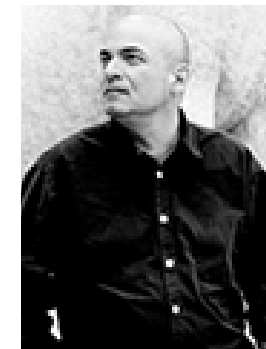
Zorlu Center, the uniquely striking architectural project that would crown this stunning property, was ready to be built.

“When making the key decisions in the architectural design process, I place the greatest importance on understanding and evaluating the surroundings in the broadest sense of the word. Every different locale dictates a different approach. In this sense, an original approach is required. It was for exactly this reason that, for the Zorlu Center project, which is being built on the last property that offers such panoramic views of the Bosphorus and historic İstanbul, we applied a site-specific approach to architectural design, developing a concept based on the internal dynamics of the site itself. By analyzing the data unique to the Zorlu Center site and developing a multi-layered creative approach we sought to find answers for the site that would make our design as flawless as possible.”



Emre Arolat
Founder of
Emre Arolat Architecture

“Located at the gateway to Europe with a 360° view of the city, situated on major arteries and at one of the highest points on the İstanbul skyline, Zorlu Center serves not only as a new urban focal point but also as an environmentally sensitive residential space. In tune with the urban fabric of 21ST century İstanbul, the project is a candidate to be come an iconic structure, and its landscape treatment, based on the concept of an urban terrace opening onto the Bosphorus is enhanced by the Performing Arts Center located at the entrance to the complex. In terms of the relationship between private and public space, the structure, by way of its own intrinsic interconnectedness, seeks to fulfill the role of a bridge between the two.”



Murat Tabanlıoğlu
Founder of
Tabanlıoğlu Architects



Ortaköy, Büyük Mecidiye Mosque

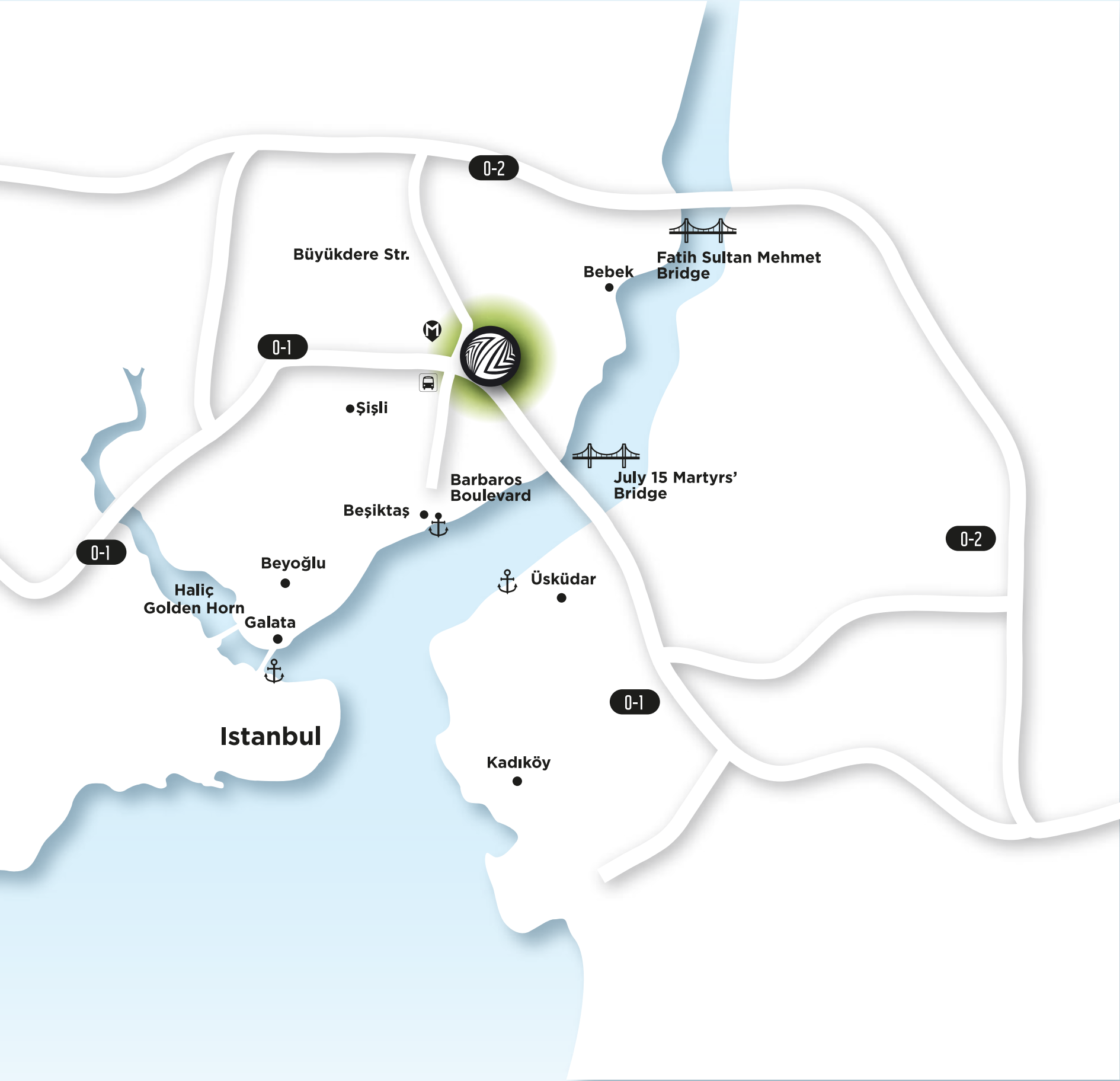
EXCEPTIONAL LIVING WITH TIMELESS BEAUTIES OF ISTANBUL

A magical city where cultures and civilizations meet and merge anew, leaving you speechless with its magnificent silhouette perched atop seven hills, splendidly blending the antiquity and the contemporary, Istanbul glows like a rare precious gem with glorious traces of history.



Waking up to the gorgeous lights of Bosphorus,
the Historical Peninsula and the Prince Islands...

EXPERIENCE THE EXTRAORDINARY EVERY DAY



AT THE CENTER OF ISTANBUL WHERE EAST MEETS WEST

Zorlu Center is rising in Zincirlikuyu, the very heart of the city where Europe and Asia embrace each other, with an ease of access to abundant means of transportation.

Underground pedestrian tunnels link Zorlu Center to Gayrettepe Metro and Zincirlikuyu Metrobus stations, as well as serving to connect these two public transport systems.



UNPARALLELED LIFESTYLE & PERFECT BLEND OF FORM AND FUNCTIONS

A modern masterpiece,
a mixed-use extravaganza rising in Istanbul...

Zorlu Center features a luxurious Shopping Mall with world-renowned brands and prestigious restaurants, the largest Performing Arts Center in Turkey hosting the world's finest shows and artists the fascinating Raffles Istanbul Hotel as well as high-end Offices and Residences offering a privileged experience of life.

Turkey's First 5 Functioned
Mixed Use Project





HAUTE LIVING IN THE MOST EXCLUSIVE DESTINATION FOR TRUE LUXURY

With its modern architecture, open-air urban square, high-fashion brand mix and inviting restaurants featuring Michelin-starred chefs, Zorlu Center creates value for people way beyond the ordinary shopping experience.





WORLD'S MOST EXCLUSIVE BRANDS ARE YOUR NEIGHBOURS

Zorlu Center, the centerpieces of which are its inviting urban squares and green spaces, is the meeting point for Istanbul, with over 190 world renowned brands, a 10,000 square meter main square adjoined by a 12,000 square meter park square.

The store mix at the Zorlu Shopping Mall rivals New York's 5th Avenue. Apple opened its first ever Turkish location in Zorlu with its iconic cubical store. Along with a 9,600 square meter Beymen department store, Zorlu Shopping Mall features the world's most sought after global brands such as Dolce&Gabbana, Valentino, Saint Laurent, Tiffany&Co., Bvlgari, Fendi, Dior, Louis Vuitton, Prada, Burberry, Roberto Cavalli, Michael Kors, Moncler, MontBlanc and many opening their first-ever Turkish locations, including Brooks Brothers, Cos, Lanvin, Pomellato and Stella McCartney.

Zorlu Shopping Mall also plays hosts to flavors from around the world, featuring restaurants by award-winning and world-famous chefs, as part of an innovative gourmet concept that presents fine dining, slow food and fast-food all under one roof.

From haute cuisine to more eclectic fare, you'll find Istanbul's best culinary and shopping experiences only a few steps from your front door.





CITY'S MOST ENTERTAINING PARK WILL BE YOUR PLAYGROUND

Zorlu Center is home to 200 different species of plants in a green area expanded over 72.000 square meters. The Park at Zorlu Center hosts amazing concerts and open air movie projections in spring and summer time.

The European Certificate awarded playground designed for children to dive into their own world of imagination, stimulated by shapes and colours. Truly one of its kind the playground offers different 'worlds' for children of different ages to explore and have 'safe adventures' highlighted with unforgettable moments.

A wondrous playground integrated with nature revolutionizes the playtime expectations for both children and their families.

Zorlu Performing Arts Center
Notre Dame De Paris

ZORLU PSM STAGES THE WORLD #WESTAGETHEWORLD

Zorlu Performing Arts Center (Zorlu PSM) celebrates the diversity and universalism of arts and culture.

Zorlu PSM has been hosting a wide variety of shows from experimental theater ensembles to worldwide stars, who set global trends, from alternative names, who embrace music in genres such as rock, electropop, progressive rock, postrock and classical music to famous Broadway and West End musicals and many more...

Zorlu Performing Arts Center is not only the largest in Turkey, it is the region's largest artistic and cultural events center.



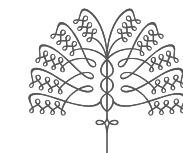
Zorlu Performing Arts Center

Raffles İstanbul

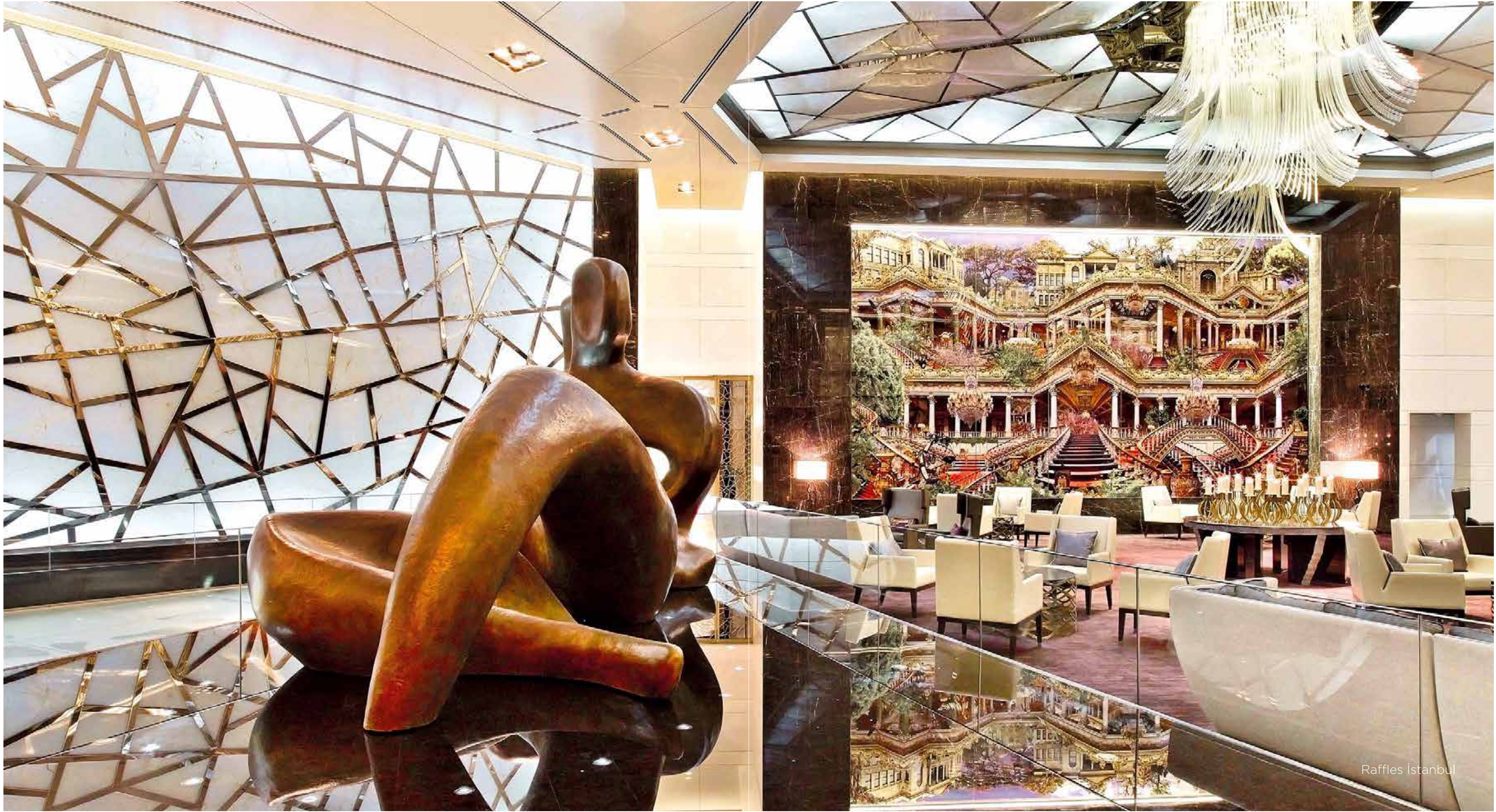
WORLD RENOWNED, IMPECCABLE RAFFLES TRADITION RIGHT AT YOUR DOORSTEP...

Raffles Hotels & Resorts opened its second hotel in Europe at Istanbul's Zorlu Center with a total of 185 rooms and 66 Raffles branded Residences – all spacious and filled with light, blending Turkish and contemporary design and offering everything the modern traveler demands.

Istanbul is a melting pot of gastronomic delights - and so is Raffles. Two restaurants; Mediterranean and Pan-Asian, legendary Long Bar, lounges and a patisserie offers a culinary theatre of possibility, day and night. Raffles Butler Service, Raffles Club and the 3000 square meters Raffles SPA are amongst services and features that interprets a sophisticated life culture at Raffles Istanbul Zorlu Center.



RAFFLES
ISTANBUL
ZORLU CENTER



ZORLU CENTER
OFFICES & RESIDENCES



YOUR OFFICE IS RIGHT NEXT DOOR

Located in the heart of Istanbul's central business district and with well-thought touches of modern architecture, this upscale office space nestled in meticulously landscaped greenery bring a brand new energy to the business world.





A PRIVILEGED LIFE COMBINING ART, ARCHITECTURE AND LUXURY: ZORLU RESIDENCES





LET THE WORLD REVOLVE AROUND YOU GRACEFULLY

With stunning views of Bosphorus, the Old City and the Historical Peninsula, the Princes' Islands and beyond, Zorlu Center Residences offer you the opportunity to revel in pure luxury blended with comfort every day.

Open up your windows all the way, look up to the sky and invite the enviable iconic view of Istanbul inside or step out to your private terrace and garden to refresh yourself in the midst of a beautifully landscaped greenery. The best the city has to offer is at your doorstep.

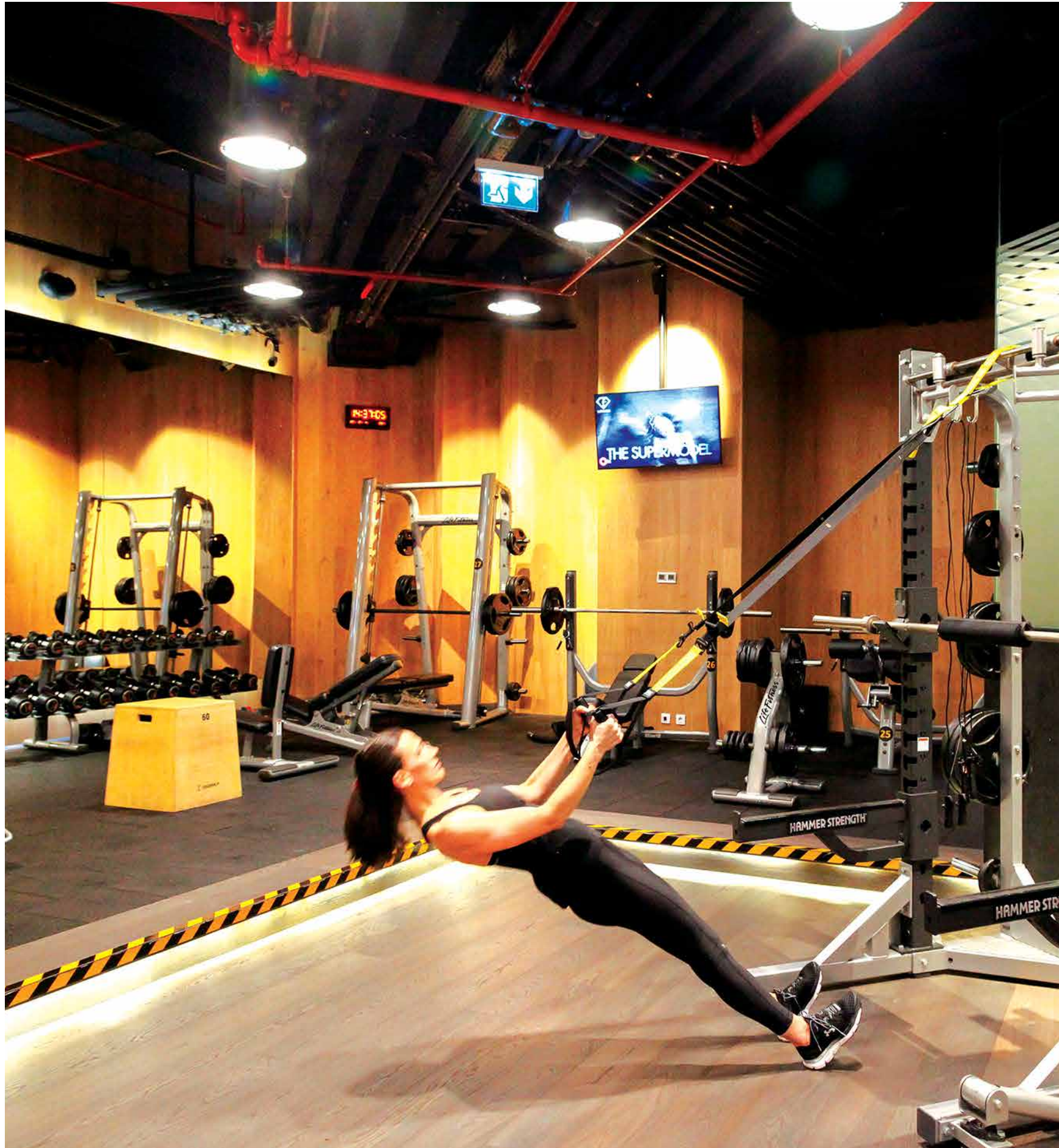




Exceptional residences where each room is specially designed for your comfort



Ravishing luxury, legendary service, elegant details and quality of materials



FEELING REBORN IS YOUR DAILY ROUTINE

Zorlu Center Residences offer an incredible workout and wellness experience with its 1,600 square meters duplex fitness club providing cutting edge cardio and weight lifting equipment as well as generous swimming pools, all exclusive to residents.

Following an intense session, the tranquil and lush spa with its therapy rooms, sauna and steam rooms are at your service for you to unwind or you may enjoy a stroll along the private park's walking and jogging trails lined with trees.



BLUE IS YOUR NEW FAVOURITE COLOUR

One indoor and four outdoor swimming pools



A TRULY EXCEPTIONAL LIVING

Zorlu Center Residences provide a variety of exclusive services and amenities such as at least two car parking spaces and a storage room per apartment among numerous others. Limitless concierge and sub concierge services which are tailored to your preferences are waiting for you.

Travel Inspiration, advice and arrangements
Ticket and hotel bookings, visa services
Special day and reception organizations at home
Catering services
Ticket bookings for cultural and art events
Restaurant reservations
VIP transfer services
Private driver services
Private security services
Transport services with private helicopter
Overseas concierge services
Personal gift arrangements
Fresh flower services to the apartments
Home decoration, wedding planning and arrangements
Entertainment consultancy
Fashion styling and shopping counseling
Art counselling
Antiques and collection expertise/maintenance services
Personal health counseling
Landscape consultancy
Special education services for individuals
Expat placement services

THE MASTERPLAN

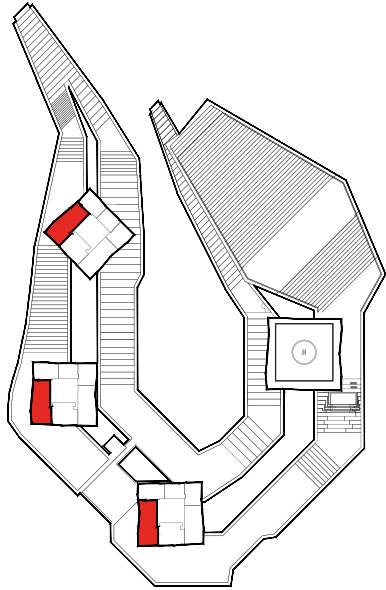


TOWER RESIDENCES
FLOOR PLANS



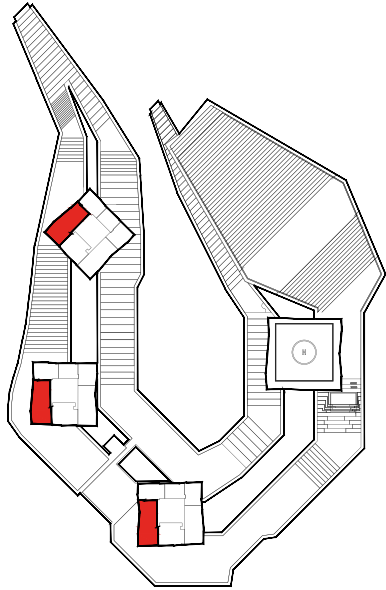
TYPE A / 4.5 + 1

Living Room	60,3 m ²	Entrance Hall	7,0 m ²
Kitchen	19,6 m ²	Hallway	12,9 m ²
Master Bedroom	29,2 m ²	Utility or Maid's Room	7,3 m ²
Master Bathroom	10,2 m ²	Powder Room	2,3 m ²
Bedroom	16,8 m ²	Terrace	40,8 m ²
Bathroom	3,5 m ²		
Bedroom	17,6 m ²		
Bathroom	3,8 m ²		
Unit Area		281,0 m²	
Total Sales Area		336,9 m²	



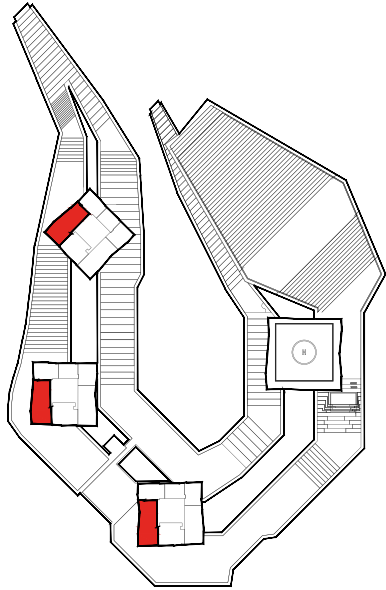
TYPE A 1/ 3.5 + 1

Living Room	81,8 m ²	Entrance Hall	7,0 m ²
Kitchen	21,1 m ²	Hallway	11,2 m ²
Master Bedroom	32,5 m ²	Utility or Maid's Room	4,4 m ²
Master Bathroom	7,3 m ²	Attendant Bathroom	2,5 m ²
Bedroom	16,7 m ²	Powder Room	2,3 m ²
Bathroom	3,5 m ²	Terrace	41,4 m ²
Bedroom	17,8 m ²		
Bathroom	3,6 m ²		
Unit Area		282,7 m²	
Total Sales Area		338,8 m²	



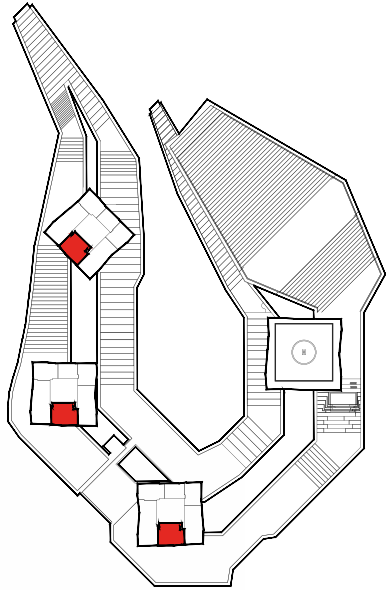
TYPE A 2 / 3.5 + 1

Living Room	63,2 m ²	Hallway	9,5 m ²
Kitchen	20,03 m ²	Utility or Maid's Room	4,4 m ²
Master Bedroom	54,9 m ²	Attendant Bathroom	2,5 m ²
Master Bathroom	7,3 m ²	Powder Room	2,3 m ²
Bedroom	19,0 m ²	Terrace	40,1 m ²
Bathroom	3,8 m ²		
Bedroom	16,9 m ²	Unit Area	283,9 m²
Bathroom	3,3 m ²	Total Sales Area	340,7 m²
Entrance Hall	7,0 m ²		



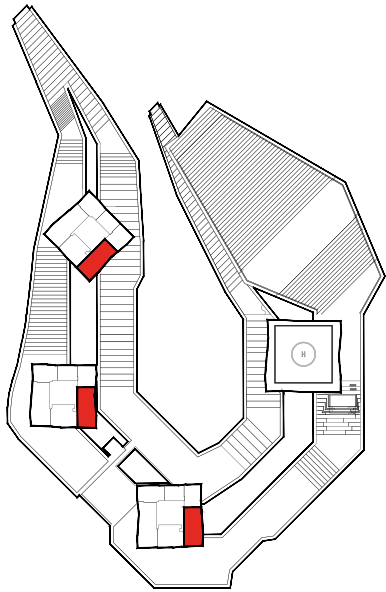
TYPE B / 2.5 + 1

Living Room	55,11 m ²	Utility or Maid's Room	4,1 m ²
Kitchen	12,3 m ²	Attendant Bathroom	3,1 m ²
Master Bedroom	28,4 m ²	Powder Room	3,0 m ²
Master Bathroom	6,9 m ²	Terrace	8,2 m ²
Bedroom	21,0 m ²		
Bathroom	4,1 m ²	Unit Area	177,7 m²
Entrance Hall	4,3 m ²	Total Sales Area	217,2 m²
Hallway	4,7 m ²		



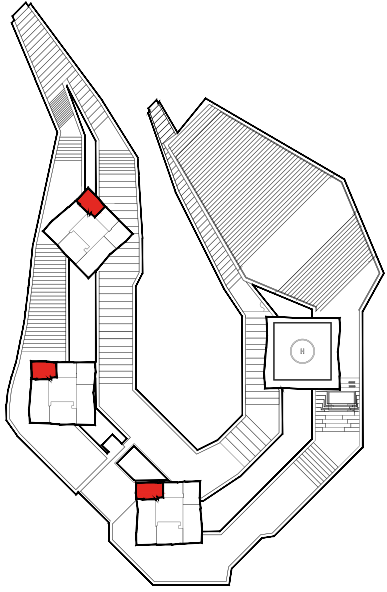
TYPE C / 3.5 + 1

Living Room	54,8 m ²	Entrance Hall	11,0 m ²
Kitchen	16,5 m ²	Hallway	8,7 m ²
Master Bedroom	29,1 m ²	Utility or Maid's Room	7,3 m ²
Master Bathroom	7,1 m ²	Powder Room	2,2 m ²
Bedroom	17,1 m ²	Terrace	39,0 m ²
Bathroom	3,1 m ²		
Bedroom	17,4 m ²		
Bathroom	3,4 m ²		
Unit Area		242,3 m²	
Total Sales Area		289,6 m²	



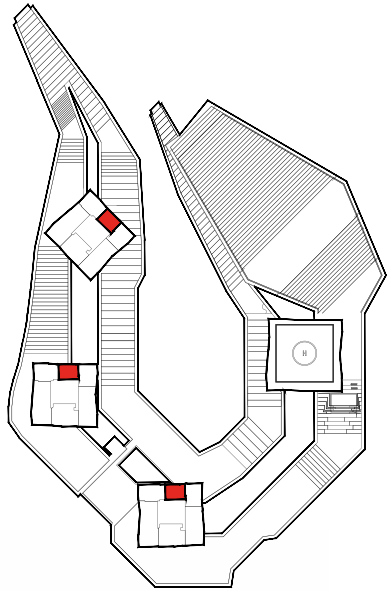
TYPE D / 2 + 1

Living Room	30,8 m ²	Powder Room	2,1 m ²
Kitchen	17,7 m ²	Terrace	28,3 m ²
Master Bedroom	23,5 m ²		
Master Bathroom	6,9 m ²		
Bedroom	14,4 m ²		
Bathroom	5,0 m ²		
Entrance Hall	8,4 m ²		
Hallway	4,0 m ²		
Unit Area		160,3 m²	
Total Sales Area		191,0 m²	



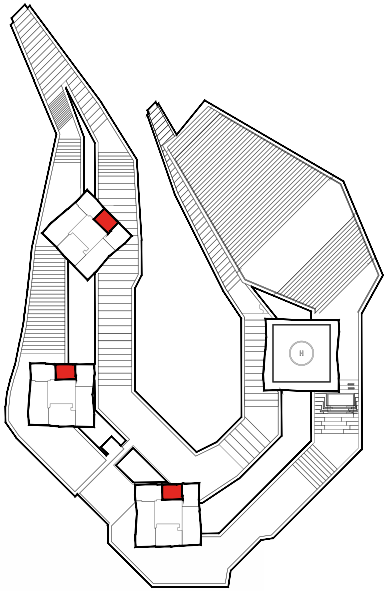
TYPE E / 2 + 1

Living Room	26,8 m ²	Hallway	9,3 m ²
Kitchen	11,7 m ²	Powder Room	3,3 m ²
Master Bedroom	26,3 m ²	Terrace	5,9 m ²
Master Bathroom	5,5 m ²		
Bedroom	18,6 m ²	Unit Area	132,8 m²
Bathroom	3,5 m ²	Total Sales Area	162,3 m²
Entrance Hall	3,7 m ²		



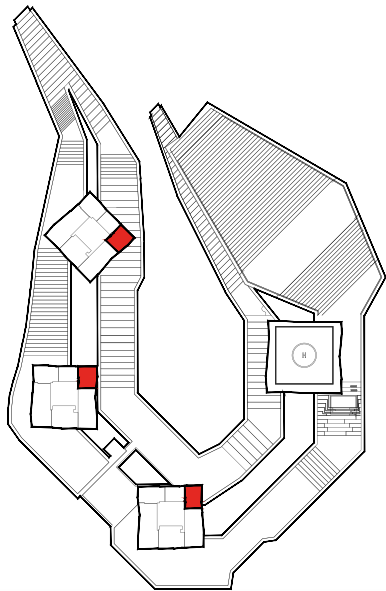
TYPE E / 1 + 1

Living Room	49,5 m ²	Powder Room	3,3 m ²
Kitchen	7,1 m ²	Terrace	6,1 m ²
Master Bedroom	37,0 m ²		
Master Bathroom	4,9 m ²	Unit Area	132,9 m²
Bedroom	3,7 m ²	Total Sales Area	162,4 m²
Hallway	5,3 m ²		



TYPE F / 2 + 1

Living Room	35,1 m ²	Entrance Hall	7,8 m ²
Kitchen	12,4 m ²	Hallway	3,9 m ²
Master Bedroom	19,7 m ²	Terrace	34,6 m ²
Master Bathroom	4,1 m ²		
Bedroom	11,7 m ²	Unit Area	151,7 m²
Bathroom	4,9 m ²	Total Sales Area	179,0 m²

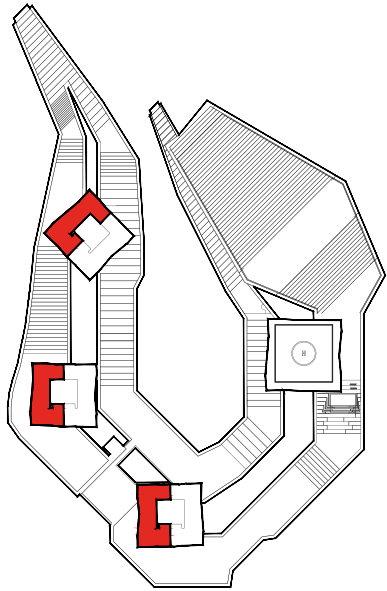


PENTHOUSES
FLOOR PLANS



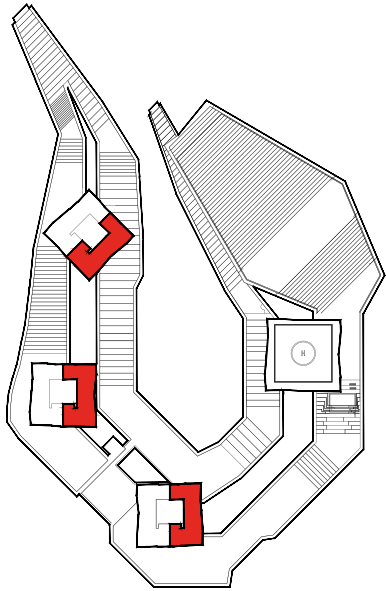
TYPE G / 5.5 + 1

Living Room	161,74 m ²	Utility or Maid's Room	4,25 m ²
Kitchen	30,35 m ²	Attendant Bathroom	2,76 m ²
Bedroom	16,34 m ²	Studio	7,95 m ²
Bathroom	4,00 m ²	Corridor	18,44 m ²
Bedroom	32,15 m ²	Entrance Hall	28,13 m ²
Bathroom	5,81 m ²	Cloakroom	4,34 m ²
Bedroom	31,83 m ²	Powder Room	5,25 m ²
Bathroom	5,56 m ²	Terrace	66,06 m ²
Master Bedroom	53,84 m ²		
Master Bathroom	16,37 m ²		
Bedroom	37,75 m ²		
Bathroom	5,71 m ²		
Unit Area		578,40 m²	
Total Sales Area		707,30 m²	



TYPE H / 5.5 + 1

Living Room	153,55 m ²	Cellar	3,74 m ²
Kitchen	29,85 m ²	Utility or Maid's Room	4,25 m ²
Bedroom	15,55 m ²	Attendant Toilet	3,02 m ²
Bathroom	4,00 m ²	Studio	7,96 m ²
Bedroom	31,32 m ²	Corridor	23,08 m ²
Bathroom	5,81 m ²	Entrance Hall	28,08 m ²
Bedroom	33,96 m ²	Cloakroom	5,37 m ²
Bathroom	5,59 m ²	Powder Room	2,88 m ²
Master Bedroom	52,97 m ²	Terrace	85,02 m ²
Master Bathroom	21,54 m ²		
Bedroom	34,69 m ²		
Bathroom	6,57 m ²		
Unit Area		610,90 m²	
Total Sales Area		734,60 m²	

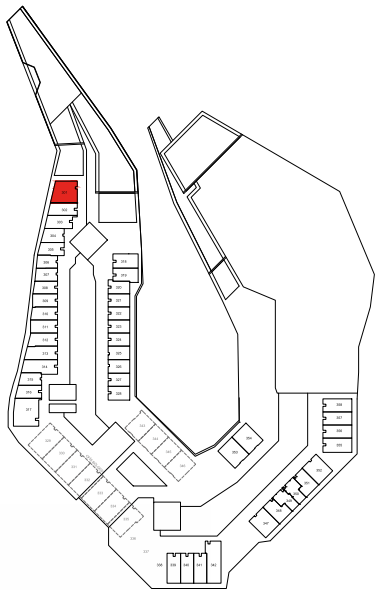


TERRACE RESIDENCES FLOOR PLANS

101

Living Area	151 m ²
Kitchen	7,9 m ²
Bathroom	3,7 m ²
Entrance Hall	5,0 m ²
Terrace	72,9 m ²

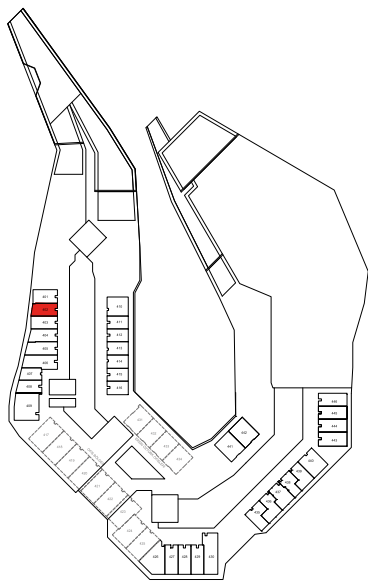
Unit Area	268,5 m ²
Total Sales Area	314,0 m ²



202

Living Area	88,1 m ²
Kitchen	9,2 m ²
Bathroom	3,7 m ²
Powder Room	2,2 m ²
Storage	2,7 m ²
Hall	3,7 m ²
Terrace	19,9 m ²

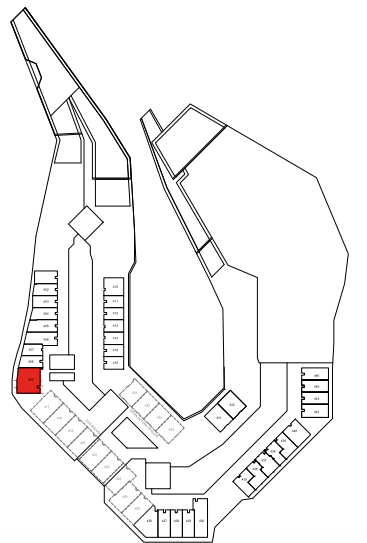
Unit Area	145,1 m ²
Total Sales Area	174,2 m ²



209

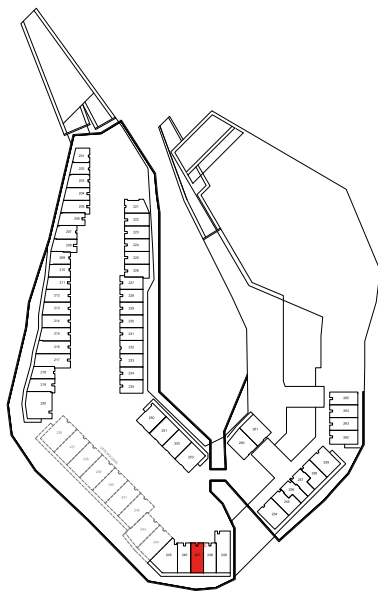
Living Area	192,7 m ²
Kitchen	13,7 m ²
Bathroom	3,6 m ²
Powder Room	2,6 m ²
Storage	3,9 m ²
Entrence Hall	7,9 m ²
Terrace	110,6 m ²

Unit Area	369,9 m ²
Total Sales Area	430,3 m ²



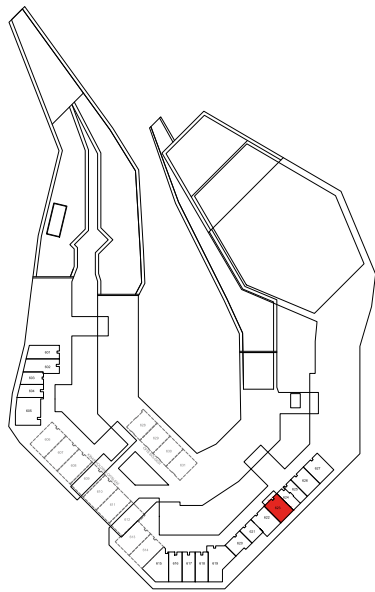
043

Living Area	110,5 m ²
Kitchen	7,7 m ²
Bathroom	3,4 m ²
Powder Room	2,5 m ²
Storage	3,9 m ²
Terrace	17,4 m ²
Unit Area	164,8 m²
Total Sales Area	199,1 m²



449

Living Area	122,9 m ²
Kitchen	8,4 m ²
Bathroom	4,1 m ²
Powder Room	2,7 m ²
Terrace	31,4 m ²
Unit Area	188,4 m²
Total Sales Area	225,0 m²





Depicted as one of the most significant players in both the Turkish and the global market with its financial power, production capacity, vision, entrepreneurship and innovative approach, Zorlu Group is engaged in the fields textiles, consumer electronics, information technologies, white goods, energy, property development and mining & metallurgy.

With over 65 years of experience, Zorlu Group achieved growth with its business activities in home textile until the 1980s and founded and launched one of the leading brands in Turkey that shapes the market in its own field TAÇ.

In 1994, the company acquired Vestel Electronics and entered the energy industry with Zorlu Energy in 1996 and in 2006, entered the real estate to design world-standard original projects.

The company currently has over 10 billion dollars of assets in total also carries out exportation of more than 2 billion dollars.

With over 2 billion dollars of assets only in the real estate segment, the company continues to develop leading and impressive projects featuring contemporary architecture.

Zorlu Group reflects its responsibility for the future generations through its activities and projects within the axis of economy-environment-society and continues its activities with close to 60 companies, approximately 29,000 employees for a sustainable and reliable future based on its corporate values and principles.

